



DualTech Hybrid Exit DTH Series powered by GlowZone

INSTALLATION AND OPERATING INSTRUCTIONS

IMPORTANT SAFEGUARDS

READ AND FOLLOW ALL SAFETY INSTRUCTIONS

1. Do not use outdoors.
2. Do not mount near gas or electric heaters.
3. Equipment should be mounted in locations and at heights where it will not readily be subject to tampering by unauthorized personnel.
4. The use of accessory equipment not recommended by the manufacturer may cause an unsafe condition.
5. Do not use this equipment for other than intended use.
6. Supply connections must be made inside the junction box.
7. Install using recommended junction box only.
8. Servicing of this equipment should be performed by qualified service personnel.
9. Conduct periodic visibility tests in accordance with NFPA 101 Life Safety Code.
10. Install sign indoors only, where not exposed to direct unfiltered sunlight, liquid spray, or temperatures outside of the range of 10 degrees C to 40 degrees C.

SAVE THESE INSTRUCTIONS CONSERVER LA FICHE D'INSTRUCTION

**31 Waterloo Avenue - Berwyn - PA 19312 U.S.A.
Telephone: (610) 647-8200 • Fax: (610) 296-8952**

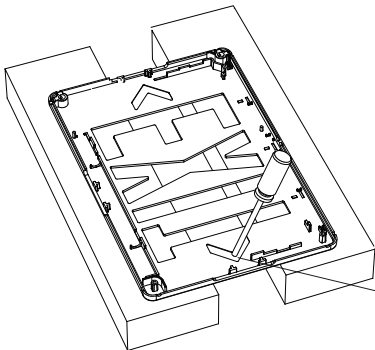
e³ LIGHTING [energy efficient emergency lighting]

INSTALLATION PROCEDURE

This Hybrid Exit Sign is designed to be mounted to a junction box (supplied by others). It can be either back, top or side mounted. The Single Face unit back mounts to either a standard 2" wide "switch box", or a 4" square or octagon box. Top or side mount requires the optional canopy and mounts to a 4" octagon box.

BACK MOUNT INSTALLATION FOR SINGLE FACE SIGN

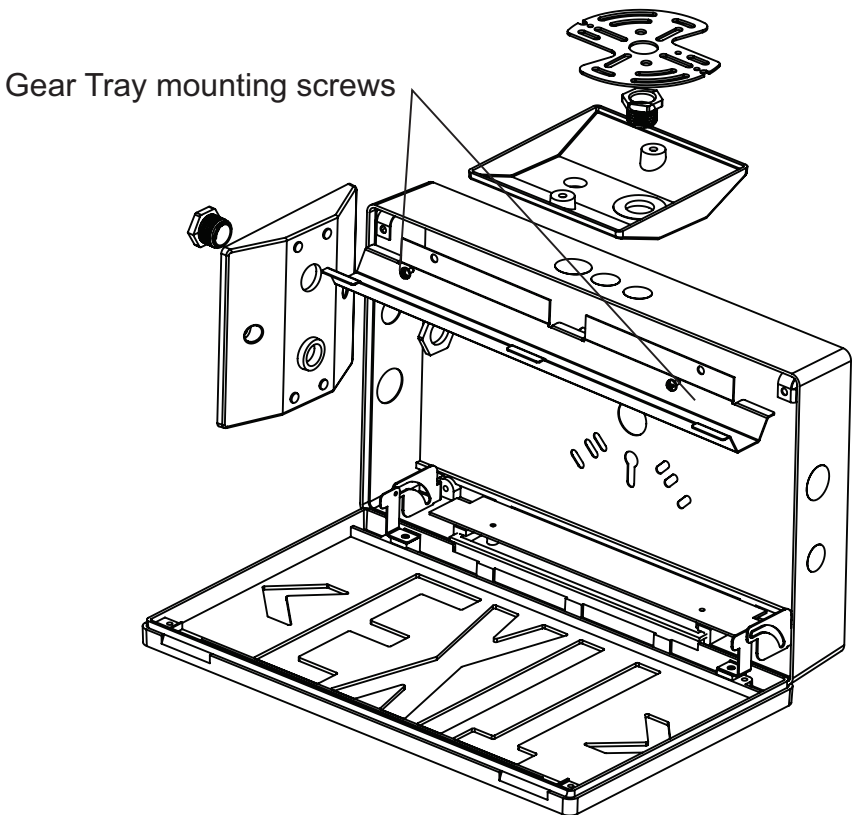
1. Open enclosure and detach hinged front cover.
2. Support enclosure on spacers and punch out appropriate screw hole and center knockouts to fit junction box.
3. Connect appropriate lead wires to feed wires in junction box as per local code.
Black lead for 120V or **Orange lead for 277V** **CAP UNUSED LEAD**
White lead for Neutral
Green lead for Ground
4. Guide lead wires through center hole and fasten enclosure to junction box.
5. Determine which directional indicators are to be removed. Remove Photoluminescent Panel and set aside. Support Front Cover as shown in diagram and knock out desired directional indicator(s).
6. Replace Photoluminescent Panel with Green Filter facing outward.



Knock out desired directional indicator(s) supporting Faceplate or Housing as shown

SIDE OR TOP MOUNT INSTALLATION USING CANOPY

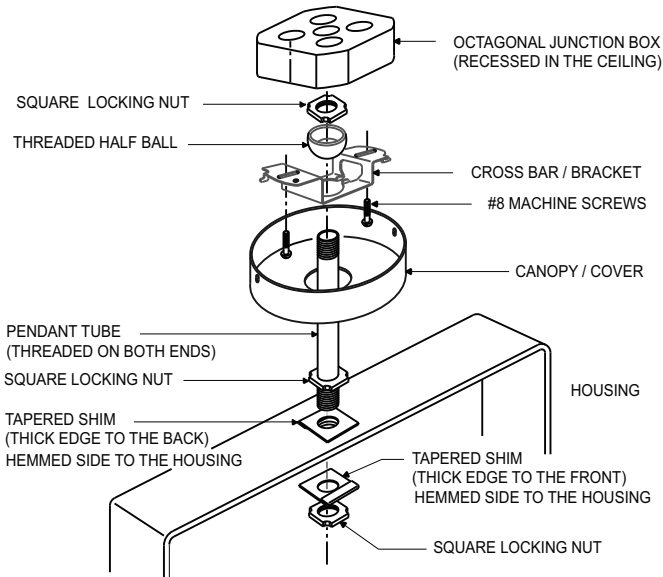
1. Follow steps above, except knock out appropriate canopy mounting holes in top or side. On double face signs, remove rear Photoluminescent Panel by removing Gear Tray mounting screws as shown in diagram below.
2. Fasten canopy to housing using flanged nipple and locknut supplied.
3. Replace Photoluminescent Panel with Green Filter facing outward.
4. Mount fixture to junction box using spider plate supplied.



COMPLETION OF INSTALLATION

1. Close cover to fixture and reapply power.
2. Notify the Authority Having Jurisdiction upon completion.

SWIVEL PENDANT ASSEMBLY INSTRUCTIONS



1. Thread tapped half ball on one end of pendant tube and lock in place with square nut.
2. Insert other end of tube through crossbar with half ball is inside hat section.
3. Insert same end of tube through center hole of canopy so crossbar is on inside of canopy.
4. Thread square nut to bottom thread on pendant tube, slide on tapered metal shim with smooth side against square nut and hemmed side against housing. Shims compensate for draft angle on sides of housing.
5. Insert threaded end of pendant tube through hole in top of housing. Slide on other tapered metal shim with hemmed side against housing and smooth side against square nut. Thread on last square nut. Before tightening nut, position the outside shim with thick edge to back of housing. Position the inside shim with thick edge to front of housing. Tighten either nut while holding shims in place.
6. Insert wires through tube so they extend out other end with excess to attach to power supply lines in junction box.
7. Attach cross bar bracket to a junction box with #8 machine screws.
8. Register threaded half ball groove tab in crossbar to prevent rotation of pendant tube.
9. Position canopy over crossbar and snap in place, aligning slots to tabs on crossbar.
10. Aim sign by loosening then re-tightening square locking nut on housing end of tube.